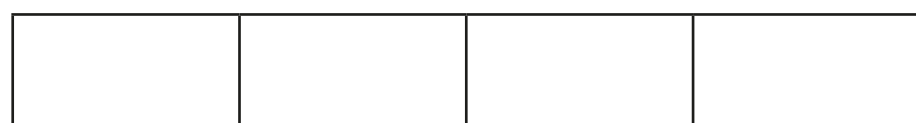
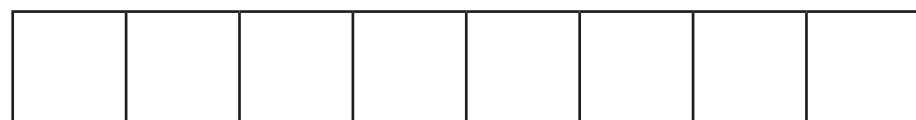


# Compare and order fractions less than 1

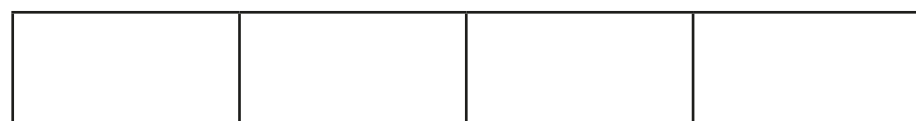


1 Write  $<$ ,  $>$  or  $=$  to compare the fractions.

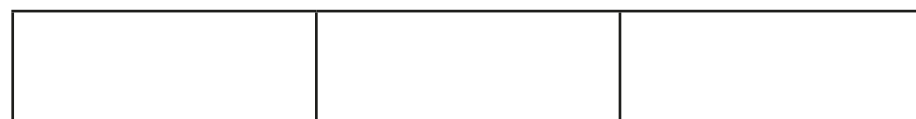
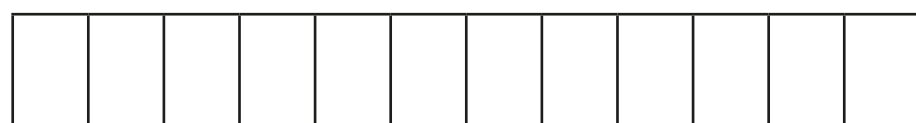
Use the bar models to help you.



$$\frac{7}{8} \bigcirc \frac{3}{4}$$



$$\frac{9}{12} \bigcirc \frac{3}{4}$$



$$\frac{7}{12} \bigcirc \frac{2}{3}$$

2 Write  $<$ ,  $>$  or  $=$  to compare the fractions.

$$\text{a) } \frac{1}{5} \bigcirc \frac{4}{15}$$

$$\text{g) } \frac{2}{9} \bigcirc \frac{1}{3}$$

$$\text{b) } \frac{2}{5} \bigcirc \frac{4}{15}$$

$$\text{h) } \frac{4}{9} \bigcirc \frac{1}{3}$$

$$\text{c) } \frac{2}{5} \bigcirc \frac{6}{15}$$

$$\text{i) } \frac{4}{12} \bigcirc \frac{1}{3}$$

$$\text{d) } \frac{2}{3} \bigcirc \frac{6}{15}$$

$$\text{j) } \frac{8}{12} \bigcirc \frac{2}{3}$$

$$\text{e) } \frac{2}{3} \bigcirc \frac{6}{12}$$

$$\text{k) } \frac{8}{12} \bigcirc \frac{3}{3}$$

$$\text{f) } \frac{2}{3} \bigcirc \frac{6}{9}$$

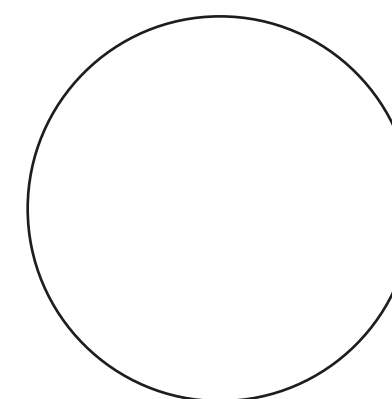
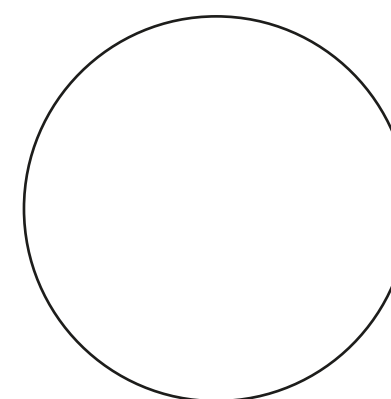
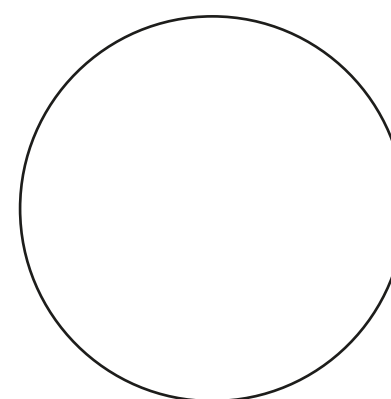
$$\text{l) } \frac{8}{12} \bigcirc \frac{3}{4}$$

3 Sort the fractions into the circles.

greater than  $\frac{1}{3}$

equal to  $\frac{1}{3}$

less than  $\frac{1}{3}$



- |               |               |               |               |               |                |                |                |                |
|---------------|---------------|---------------|---------------|---------------|----------------|----------------|----------------|----------------|
| $\frac{2}{3}$ | $\frac{1}{6}$ | $\frac{1}{2}$ | $\frac{2}{6}$ | $\frac{2}{9}$ | $\frac{5}{12}$ | $\frac{4}{12}$ | $\frac{4}{15}$ | $\frac{5}{15}$ |
|---------------|---------------|---------------|---------------|---------------|----------------|----------------|----------------|----------------|

- 4 What could the missing numerators and denominators be?

Write a number in each box to make the statements correct.

a)  $\frac{\boxed{\phantom{000}}}{5} < \frac{5}{15}$

d)  $\frac{\boxed{\phantom{000}}}{3} < \frac{5}{6}$

g)  $\frac{6}{9} < \frac{5}{\boxed{\phantom{000}}}$

b)  $\frac{\boxed{\phantom{000}}}{6} < \frac{5}{12}$

e)  $\frac{3}{5} < \frac{5}{\boxed{\phantom{000}}}$

h)  $\frac{10}{12} < \frac{5}{\boxed{\phantom{000}}}$

c)  $\frac{\boxed{\phantom{000}}}{12} < \frac{5}{6}$

f)  $\frac{5}{6} < \frac{5}{\boxed{\phantom{000}}}$

i)  $\frac{23}{24} < \frac{5}{\boxed{\phantom{000}}}$

Compare answers with a partner.

- 5 Tommy and Eva are comparing fractions.

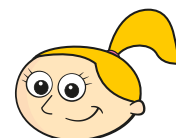
$\frac{2}{3}$     $\frac{8}{12}$     $\frac{4}{9}$



Tommy

I found a common denominator of 36 to compare the fractions.

I found a common numerator of 4 to compare the fractions.



Eva

Whose method is more efficient? \_\_\_\_\_

Talk about your answer with a partner.

- 6 Write the fractions in ascending order.

a)  $\frac{2}{5}, \frac{2}{7}, \frac{2}{3}, \frac{2}{4}, \frac{2}{10}$

b)  $\frac{2}{3}, \frac{5}{9}, \frac{1}{9}, \frac{5}{6}, \frac{2}{9}$

c)  $\frac{3}{5}, \frac{7}{10}, \frac{1}{2}, \frac{3}{10}, \frac{1}{5}$

d)  $\frac{3}{8}, \frac{6}{17}, \frac{12}{30}, \frac{2}{7}, \frac{1}{3}$

- 7 What could the missing numerator be?

$\frac{3}{5} < \frac{\boxed{\phantom{000}}}{15} < \frac{9}{10}$

Write all four possibilities.

$\frac{\boxed{\phantom{000}}}{15}$     $\frac{\boxed{\phantom{000}}}{15}$     $\frac{\boxed{\phantom{000}}}{15}$     $\frac{\boxed{\phantom{000}}}{15}$